

Instructions For:

# CE-EX - Banner with Expandable Stand

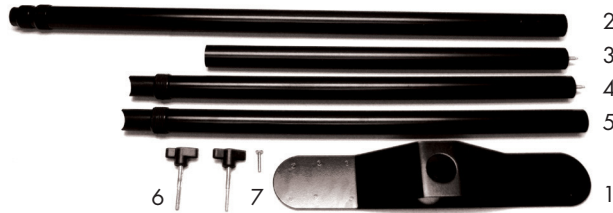
## Product Specifications

Visible Graphic: 48" up to 120" W x 36" up to 96" H  
Total Graphic Print Size: 26" up to 48" W x 36" up to 96" H  
Banner will require 2" top and bottom pole pockets  
Foot Print Dimensions: 17" L Foot



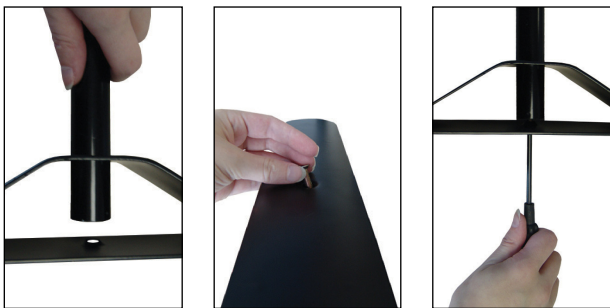
### Product Parts

- 1 - Feet (x2)
- 2 - Upright Poles (x2)
- 3 - Extensions (x2)
- 4 - Crossbar w/ Screw (x2)
- 5 - Crossbar w/o Screw (x2)
- 6 - Handled Screw (x4)
- 7. Small Screw (x2)



### Step 1

Take all parts out of the bag and parts bag. Place the bottom of one Upright Pole (2) - end with screw hole - into the hole in the top of a Foot (1). Insert a Small Screw (7) through the hole in the bottom of the Foot (1), and screw into the bottom of the Upright Pole (2).



### Step 2

Assemble the full Crossbars by attaching one Extension (3) between one Crossbar w/ Screw (4) and one Crossbar w/o Screw (5). Repeat with remaining pieces to create the second full Crossbar.



### Step 3

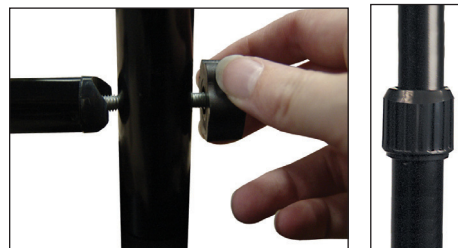
Loosen the telescoping clamps on the Crossbars so that each side extends about an inch beyond the full width of the banner. Slide the Crossbars through the pole pockets on the banner.



### Step 4

(Best done with 2 people) Line-up the contured ends of the Crossbars with the holes on the Upright Poles (2) and screw in the Handled Screws (6).

Loosen the telescoping clamps on the Upright Poles (2) until the banner is pulled taut.



**\* DO NOT OVERTIGHTEN THE HANDLED SCREWS. \***